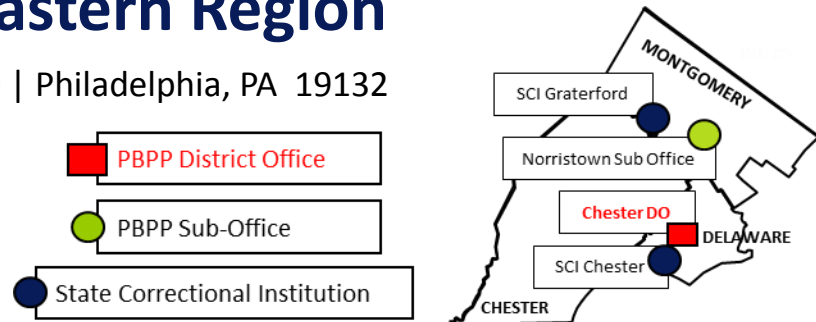


# Chester District Office of the Eastern Region

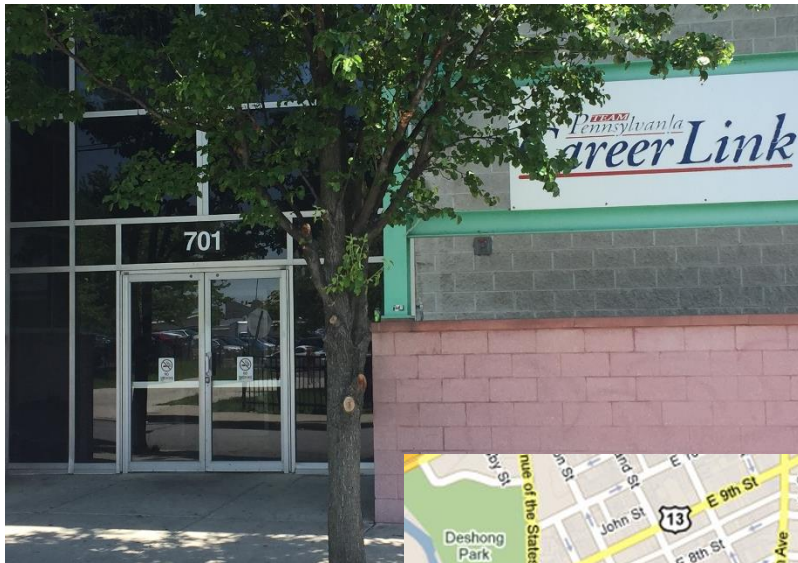
Eastern Region Office | 2630 North 13<sup>th</sup> Street | Suite 100 | Philadelphia, PA 19132  
Phone: 215.560.6594

Individuals under parole supervision are to **REPORT to** the Chester District Office or the Norristown Sub Office. The **addresses are listed below.**



## Chester District Office

701 Crosby Street – Suite C | Chester, PA 19013  
Phone: 610.447.3270



## Norristown Sub Office

1961 New Hope Street | Norristown, PA 19401  
Phone: 484.250.7580

